



MONTHLY MEMBERSHIP PROGRESS REPORT

District 30 S

Results as of: 3/31/2017

GMT: HARVEY WHITLEY

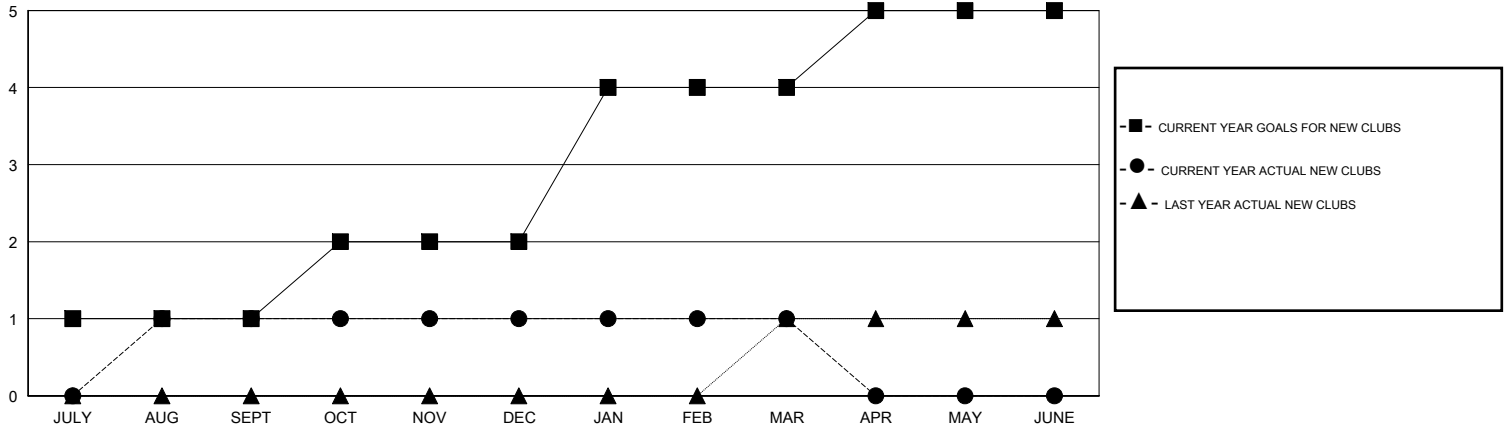
LOCATION MISSISSIPPI

GMT CA

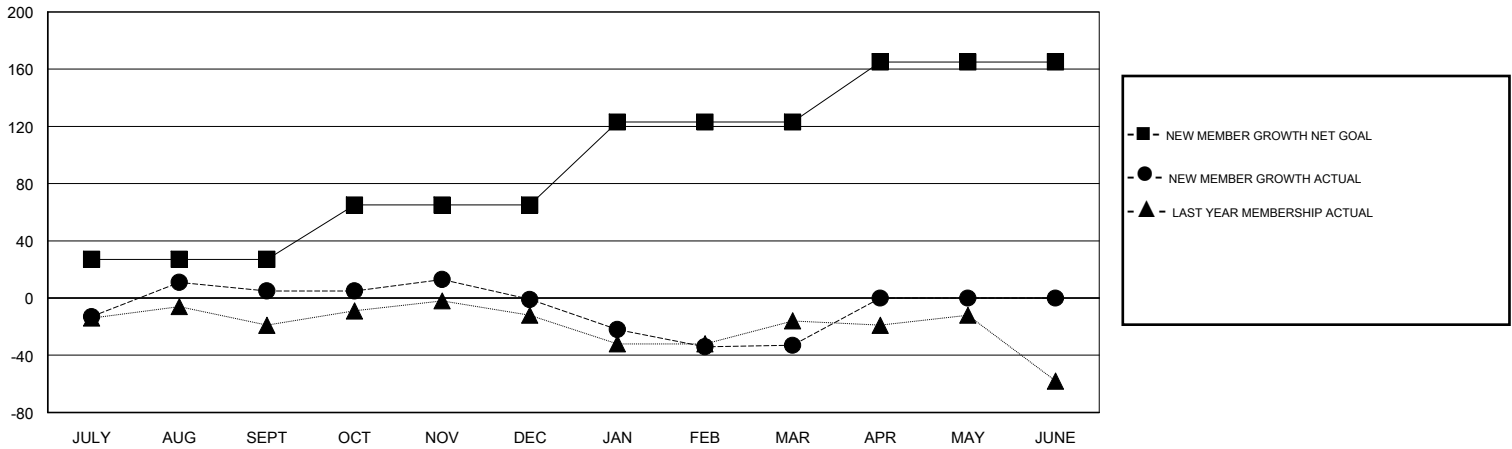
Clubs			
RESULTS FOR 2016-2017			
QUARTER	NEW CLUB GOAL	NEW CLUBS	DROPPED CLUBS
JULY/AUG/SEPT	1	1	0
OCT/NOV/DEC	1	0	1
JAN/FEB/MAR	2	0	0
APR/MAY/JUNE	1	0	0

Members			
RESULTS FOR 2016-2017			
QUARTER	NEW MEMBER GROWTH NET GOAL (not reinstated or transfers)	NEW MEMBER GROWTH ACTUAL (not reinstated or transfers)	DROPPED MEMBERS ACTUAL (including transfers)
JULY/AUG/SEPT	27	49	44
OCT/NOV/DEC	38	41	47
JAN/FEB/MAR	58	23	55
APR/MAY/JUNE	42	0	0

GOALS AND ACTUAL NEW CLUBS CUMULATIVE



GOALS AND ACTUAL MEMBERS CUMULATIVE



DROPPED CLUBS: 1	29 CLUBS OF 52 ADDED 1 OR MORE NEW MEMBERS	<u>GENDER DISTRIBUTION</u>	
DROPPED MEMBERS		MALE	871 (70.87%)
DECEASED	14	FEMALE	358 (29.13%)
CLUB CANCELLED	6	TOTAL FAMILY UNIT MEMBERS	
OTHER	126	139	
TOTAL	146	FAMILY MEMBERS PAYING HALF DUES	
		71	

[CLICK HERE FOR CUMULATIVE MEMBERSHIP DATA](#)